
Product Specification

NAME: Touch 0-10V output dimmer

MODEL: DM011



Summarization

Touch panel dimmer is a kind of controller can be realized 0-10V voltage output, which adopts glass panel designed, beautiful and fashion appearance. Besides high precision capacitive touch control chip is used to increase the sensitivity of touching, reducing the error trigger. This product input voltage is AC90-240V, and output 0-10V voltage signal, also can be used with 0-10V dimmer of our company.

Technical Parameters

- Working temperature: -20-60 °C
- Supply voltage: AC90-240V
- Output: voltage signal 0-10V
- Net weight: 165g
- Gross weight: 210g
- External dimension: L86*W86*H37 mm

Apt Corporation Limited

Add: Building 5, Zhenbao industrial Park, Beihuan Road, ShiyanTown, Shenzhen City, China.

Tel: +86-188-18535175

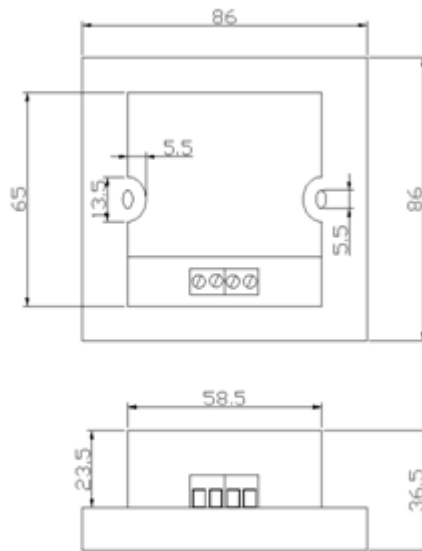
Fax: +86-755-29840713

Email: sales@aplight.com

Http://www.aplight.com

- Packing size: L115*W112*H56 mm
- Output current :<15mA
- Output power: <5W

External Dimension



Interface Specifications

AC IN: Power input interface, input voltage range is AC90-240V.

0-10V: Voltage signal output interface, V+ connect positive pole and V- connect grounding line, the output voltage range is DC0-10V.

Buttons Description:

Adopt touching button ,Just put the finger to touch the glass panel operation can be realized .



: Button for increasing the voltage.Each time you press this key will improve one voltage level, and one voltage level is 0.1 V, total 100 voltage levels, long press can Continuous increase series level .



: Button for reducing the voltage .Each time you press this key will decrease one voltage level, and one voltage level is 0.1 V, total 100 voltage levels, long press can Continuous decrease series level .

Apt Corporation Limited

Add: Building 5, Zhenbao industrial Park, Beihuan Road, ShiyanTown, Shenzhen City,China.

Tel: +86-188-18535175

Fax: +86-755-29840713

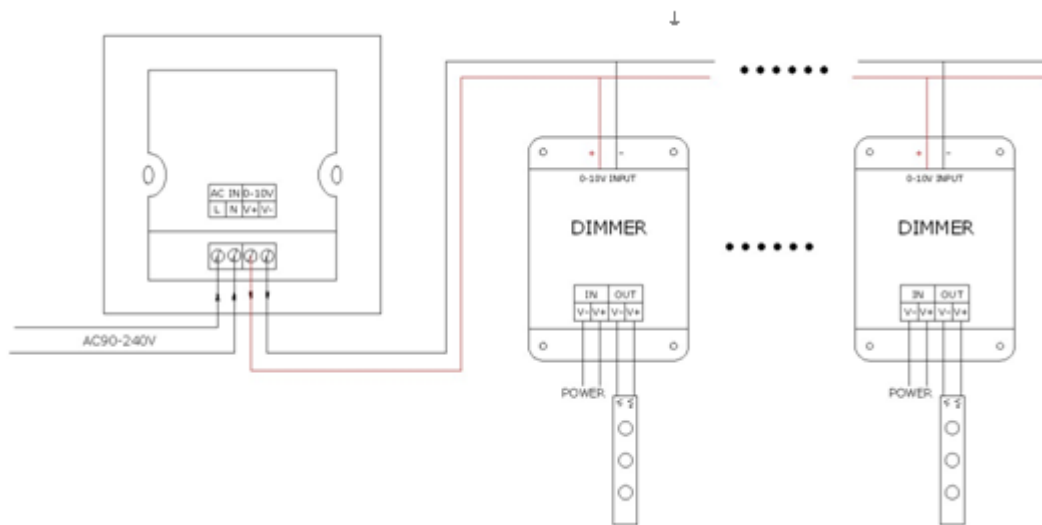
Email: sales@aptlightcom

Http://www.aptlight.com



On/off. When the dimmer is turned on, the backlight will lit;when it turn off , the backlight will go out .Long press the key for 3 seconds,you can hear a long buzzer sound, at this time any operation cannot cause any sound; Again long press the key for 3 seconds,buzzer restore normally.

Typical Application



Installation Method

(1) gently pry gaps in touch panel with a screwdriver, and then you can slowly remove the panel, as shown below;

Apt Corporation Limited

Add: Building 5, Zhenbao industrial Park, Beihuan Road, ShiyanTown, Shenzhen City,China.

Tel: +86-188-18535175

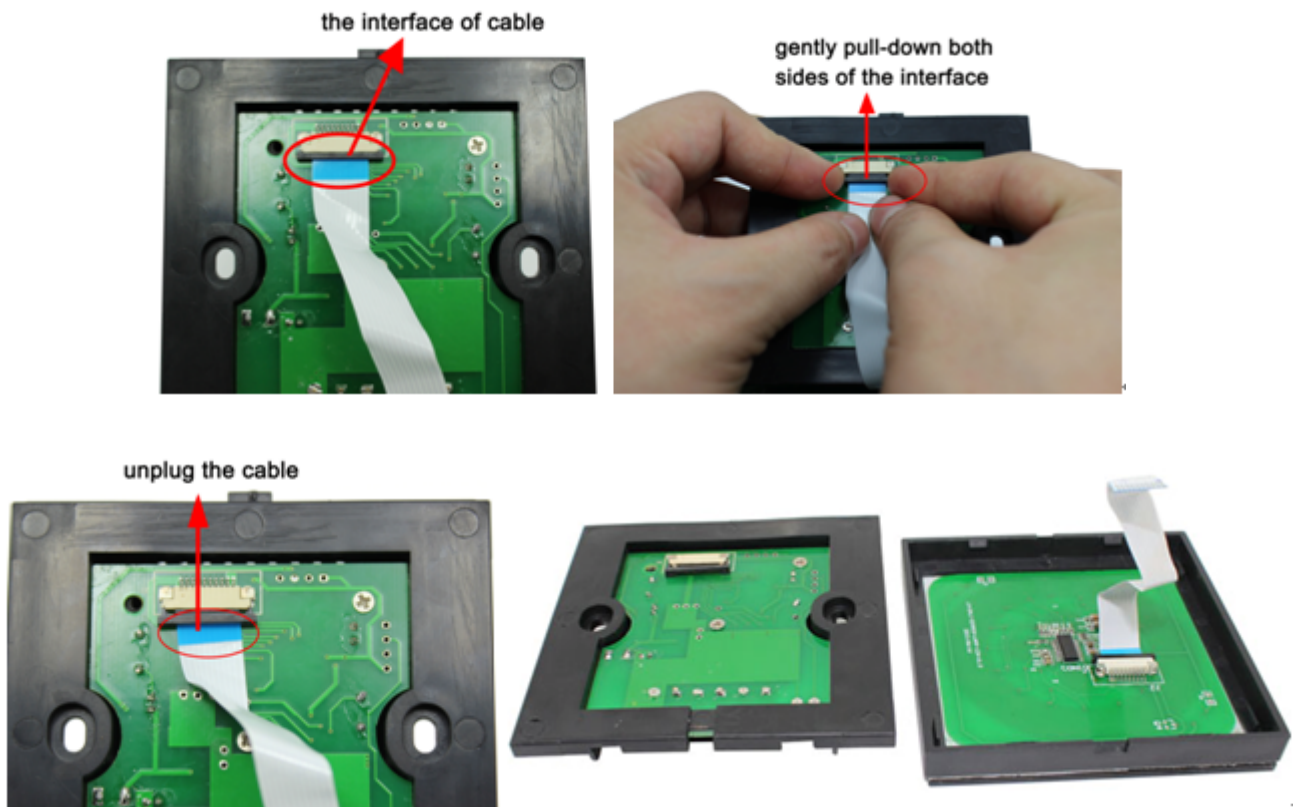
Fax: +86-755-29840713

Email: sales@aplightcom

Http://www.aplightcom



(2) remove the cable. Pull the locking of the terminal transposon, and then you can slowly remove the cable, as shown below:



Apt Corporation Limited

Add: Building 5, Zhenbao industrial Park, Beihuan Road, ShiyanTown, Shenzhen City, China.

Tel: +86-188-18535175

Fax: +86-755-29840713

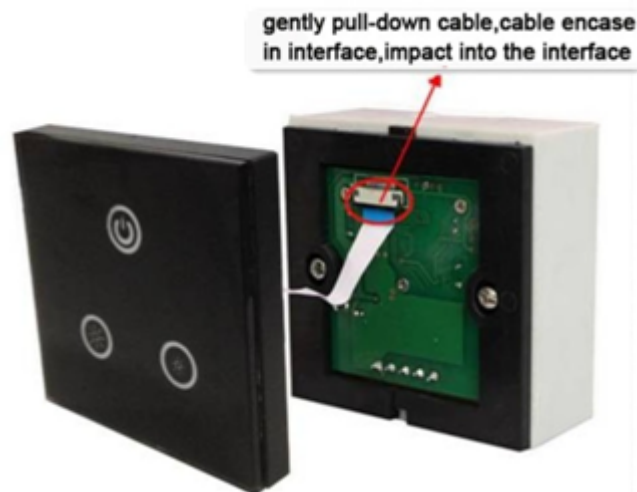
Email: sales@aplight.com

Http://www.aplight.com

3. Fix the base of controller in the 86×86 installation box (customers need to buy the installation box by themselves) on the wall with screws.



(4) use your hand gently pull down the cable seat lock according to step 2, plug the cable into cable seat, press the lock, and mount the cable of panel on the base, as shown below:



(5) installation is completed, as shown below:

Apt Corporation Limited

Add: Building 5, Zhenbao industrial Park, Beihuan Road, ShiyanTown, Shenzhen City,China.

Tel: +86-188-18535175

Fax: +86-755-29840713

Email: sales@aplightcom

Http://www.aplight.com



Remarks:

1. Connect the load wire at first, following by the power wire; **Please ensure short circuit can not occur between connecting wire before you turn on the power;**
2. The supply voltage of controller ranges in AC90-240V, it may burn out the controller once exceed the voltage ranges.